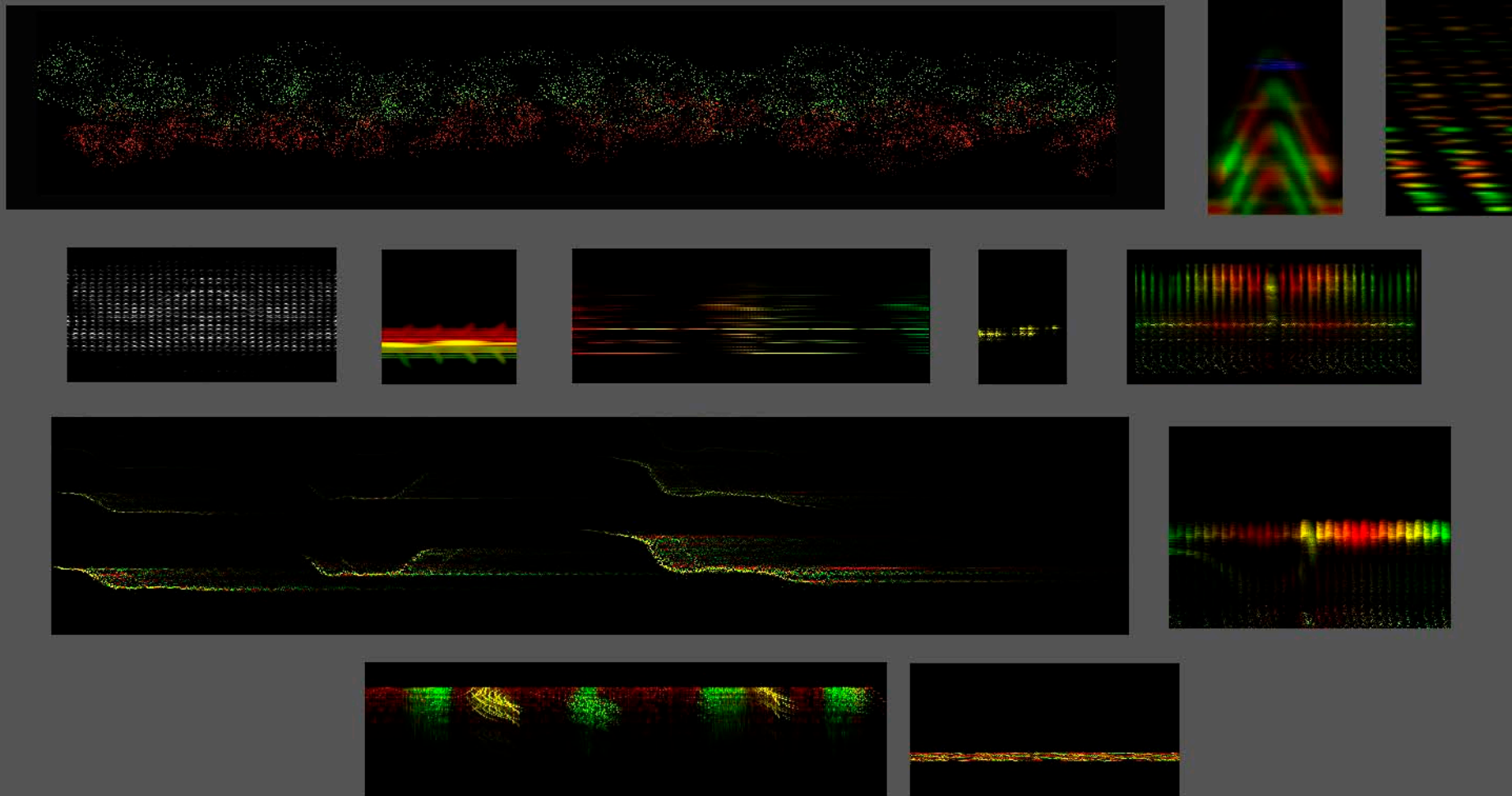


EXONAGE

Synthesized Components



Instrumental Components

Figure 1

Figure 2

Figure 3

Figure 4

Octaves

Single notes

Clusters

INSTRUCTIONS

- Figure 1: Can be transposed to any pitch specified in Figure 2. Can be played at any duration.
- Figure 2: Can be played in any rhythmic configuration.
- Figure 3: Can be transposed to any pitch specified in Figure 2. Can be played in any rhythmic configuration. Original instance must appear before inversion or retrograde.
- Figure 4: Can be transposed to any pitch specified in Figure 2. Can be played in any rhythmic configuration. Original instance must appear before inversion or retrograde.
- Octaves: Can be transposed to any pitch specified in Figure 2. Can be played in any rhythmic configuration. Does not have to appear in its entirety. Any portion can be used.
- Singles: Can be transposed to any pitch specified in Figure 2. Can be played in any rhythmic configuration. Does not have to appear in its entirety. Any portion can be used.
- Clusters: Can be transposed to any pitch specified in Figure 2.